



Nov. 17, 2010

**REDSTAR REGAINS 100% INTEREST IN NEWMAN TODD PROJECT
RED LAKE ONTARIO**

Redstar Gold Corp. (TSX.V:RGC) has received notice from Central Resources Corp. (Central) that Central will not proceed with the option on the Newman Todd project in Red Lake. As a result, Redstar has regained a 100% interest in the property and is currently making plans to continue to advance the project.

Work at the Newman Todd project, has defined a gold bearing structure that can be traced for at least 2 kilometres. To date three gold zones have been identified on the property with gold values up to **61.2 g/t gold over 1.0 metre (within 5.0 metres of 14.23 g/t gold)**. Recent drilling by Hy Lake Resources – near the boundary of the Newman Todd property – confirms the continuation of the gold bearing structure 800 metres north of Redstar’s most northerly drilling.

Posted on the company’s web site (www.redstargold.com) is a copy of this release with a map showing a model of the Newman Todd structure with the locations of Hy Lake’s drilling near the claim boundary.

Scott Weekes, President of Redstar states: “The Newman Todd project has advanced with every phase of drilling completed on the property. Past work has defined a 2.0 kilometre structure, and recent drilling by Hy Lake, is further evidence the Newman Todd project hosts a regional scale gold bearing structure. We have identified three gold bearing zones (Heath Bull, Hinge and North Breccia zones) which remain open in all directions. Our work has only tested approximately 40% of the 2.0 kilometre structure, and drilling by Hy Lake suggests the structure is much larger. Redstar regaining a 100% interest in the project gives us flexibility to advance the Newman Todd gold project in the near term.”

High-grade gold mineralization, within the Newman Todd Structural Zone, is associated with quartz veining, silicification, sulphide and magnetite replacement of intensely iron carbonate altered breccias zones. High-grade mineralization is commonly found within wide zones of lower grade mineralization (e.g. **NT-048: 26.8 g/t over 1.5 metres within 23.5 metres of 2.01g/t gold**) and occurs as multiple, steeply dipping, parallel lenses.

Table of Significant Results

Hole	Zone		From (m)	To (m)	Width (m)	Gold (g/t)
NT-031	Heath Bull Zone		124.50	136.00	11.50	1.94
NT-031		Incl.	127.00	128.00	1.00	8.73
NT-031			209.50	228.00	18.50	4.62
NT-031		Incl.	225.00	228.00	3.00	24.89
NT-031		Incl.	226.00	227.00	1.00	69.02
NT-037			46.00	59.00	13.00	1.12
NT-037		and	175.00	175.70	0.70	5.27
NT-038			244.00	249.00	5.00	2.44
NT-038		and	248.00	249.00	1.00	6.20
NT-040			131.00	144.00	13.00	2.15
NT-040		Incl.	139.00	140.00	1.00	14.30
NT-040			197.00	264.00	67.00	1.76
NT-040		Incl.	219.00	221.00	2.00	9.88
NT-040		Incl.	220.00	221.00	1.00	15.00
NT-040		and	258.00	263.00	5.00	14.23
NT-040		Incl.	258.00	259.00	1.00	61.20

Neither TSX Venture Exchange nor its Regulation Services Provider (as that term is defined in the policies of the TSX Venture Exchange) accepts responsibility for the adequacy or accuracy of this release.



Hole	Zone		From (m)	To (m)	Width (m)	Gold (g/t)	
NT-047	Heath Bull Zone		359.00	363.00	4.00	4.42	
NT-047		Incl.	360.70	362.00	1.30	12.84	
NT-047		Incl.	360.70	361.35	0.65	24.86	
NT-047		Incl.	361.00	361.35	0.35	45.30	
NT-048				167.00	190.50	23.50	2.01
NT-048		Incl.		167.00	180.00	13.00	3.41
NT-048		And	167.00	168.50	1.50	26.80	
NT-048				240.00	242.00	2.00	6.75
NT-048		Incl.	240.00	241.00	1.00	12.05	
NT-051				298.00	299.00	1.00	4.46
NT-051		and		356.00	357.00	1.00	2.91
NT-055				55.00	57.00	2.00	3.13
NT-055		Incl.		56.00	57.00	1.00	5.68
NT-055		and		196.60	200.00	3.40	1.47
NT-055		Incl.		198.00	199.00	1.00	3.77
NT-055		and	292.00	293.00	1.00	24.00	
NT-042	Hinge Zone		249.00	294.00	45.00	1.50	
NT-042		Incl.	250.00	251.00	1.00	25.70	
NT-046				160.50	191.00	30.50	1.85
NT-046		Incl.		169.00	174.00	5.00	7.78
NT-046		Incl.	171.00	174.00	3.00	10.87	
NT-046		Incl.	173.00	174.00	1.00	23.50	
NT-046				233.70	234.90	1.20	4.31
NT-046		Incl.	234.60	234.90	0.30	15.70	
NT-053				124.00	125.00	1.00	3.61
NT-053		and		264.00	276.00	12.00	1.04
NT-053		Incl.		268.00	270.00	2.00	3.36
NT-053		and		298.00	311.00	13.00	1.00
NT-053		Incl.		301.00	306.00	5.00	2.01
NT-053		and		335.00	338.00	3.00	3.76
NT-053		Incl.		335.00	336.60	1.60	6.56
NT-053		and Incl.	335.50	336.00	0.50	11.60	
NT-053		and		343.00	345.00	2.00	5.13
NT-053		including		343.00	344.00	1.00	6.96
NT-050		and		250.00	251.00	1.00	3.90
NT-050	and		268.00	270.00	2.00	3.06	
NT-035	NE Breccia Zone		6.00	7.00	1.00	9.28	
NT-036				13.00	14.00	1.00	6.67
NT-036		and		231.00	256.43	25.43	1.46
NT-036		Incl.	231.00	233.00	2.00	12.08	
NT-036		Incl.	232.00	233.00	1.00	16.35	
NT-039				158.00	160.00	2.00	7.60
NT-039		Incl.	158.00	159.00	1.00	14.00	
NT-039		and		217.00	218.00	1.00	7.34
NT-043				88.00	97.00	9.00	2.96
NT-043		Incl.		91.00	93.00	2.00	6.24
NT-052				346.00	346.60	0.60	4.55
NT-054				37.00	38.00	1.00	3.40
NT-054		and		234.90	235.90	1.00	5.32
NT-054		and		275.00	282.10	7.10	1.36
NT-054		Incl.		276.00	278.00	2.00	3.68
NT-054		and Incl.		276.00	276.50	0.50	6.61

Neither TSX Venture Exchange nor its Regulation Services Provider (as that term is defined in the policies of the TSX Venture Exchange) accepts responsibility for the adequacy or accuracy of this release.



Bob Singh P. Geo., a qualified person as defined by National Instrument 43-101, has reviewed this news release. Bob Singh is the Canadian Exploration Manager for Redstar Gold Corp.

On Behalf of the Board,
Redstar Gold Corp

"Scott Weekes"

Scott Weekes
President

Forward-Looking Information This release includes certain statements that may be deemed "forward-looking statements". All statements in this release, other than statements of historical facts, that address events or developments that Redstar Gold Corporation (the "Company") expects to occur, are forward-looking statements. Forward-looking statements are statements that are not historical facts and are generally, but not always, identified by the words "expects", "plans", "anticipates", "believes", "intends", "estimates", "projects", "potential" and similar expressions, or that events or conditions "will", "would", "may", "could" or "should" occur. Although the Company believes the expectations expressed in such forward-looking statements are based on reasonable assumptions, such statements are not guarantees of future performance and actual results may differ materially from those in the forward-looking statements. Factors that could cause the actual results to differ materially from those in forward-looking statements include market prices, exploitation and exploration successes, and continued availability of capital and financing, and general economic, market or business conditions. Investors are cautioned that any such statements are not guarantees of future performance and actual results or developments may differ materially from those projected in the forward-looking statements. Forward-looking statements are based on the beliefs, estimates and opinions of the Company's management on the date the statements are made. Except as required by applicable securities laws, the Company undertakes no obligation to update these forward-looking statements in the event that management's beliefs, estimates or opinions, or other factors, should change.

TSX.V:RGC
WWW.REDSTARGOLD.COM
SUITE 615
800 WEST PENDER STREET
VANCOUVER, BC TEL: 604.488.0051

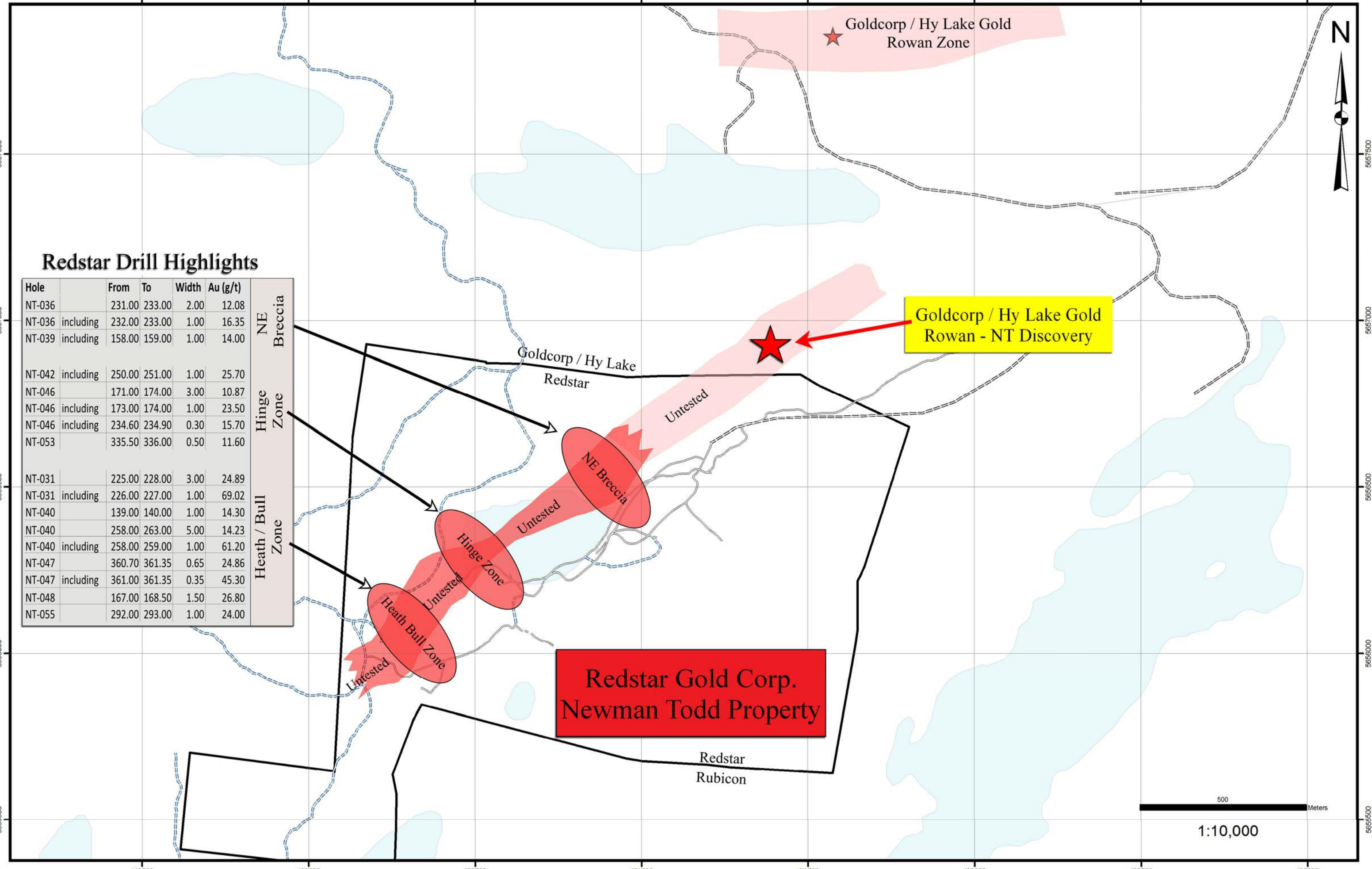
CORPORATE INQUIRIES
Redstar Gold Corp.
Tim Mikula, Investor Relations tmikula@redstargold.com
Tel: 604.488.0051

419500 420000 420500 421000 421500 422000 422500 423000



Redstar Drill Highlights

Hole		From	To	Width	Au (g/t)	
NT-036		231.00	233.00	2.00	12.08	NE Breccia
NT-036	including	232.00	233.00	1.00	16.35	
NT-039	including	158.00	159.00	1.00	14.00	
NT-042	including	250.00	251.00	1.00	25.70	Hinge Zone
NT-046		171.00	174.00	3.00	10.87	
NT-046	including	173.00	174.00	1.00	23.50	
NT-046	including	234.60	234.90	0.30	15.70	
NT-053		335.50	336.00	0.50	11.60	Heath / Bull Zone
NT-031		225.00	228.00	3.00	24.89	
NT-031	including	226.00	227.00	1.00	69.02	
NT-040		139.00	140.00	1.00	14.30	
NT-040		258.00	263.00	5.00	14.23	
NT-040	including	258.00	259.00	1.00	61.20	
NT-047		360.70	361.35	0.65	24.86	
NT-047	including	361.00	361.35	0.35	45.30	
NT-048		167.00	168.50	1.50	26.80	
NT-055		292.00	293.00	1.00	24.00	



Goldcorp / Hy Lake Gold Rowan - NT Discovery

Redstar Gold Corp.
Newman Todd Property

500 Meters

1:10,000

419500 420000 420500 421000 421500 422000 422500 423000

5657500

5657000

5656500

5656000

5655500

5657500

5657000

5656500

5656000

5655500